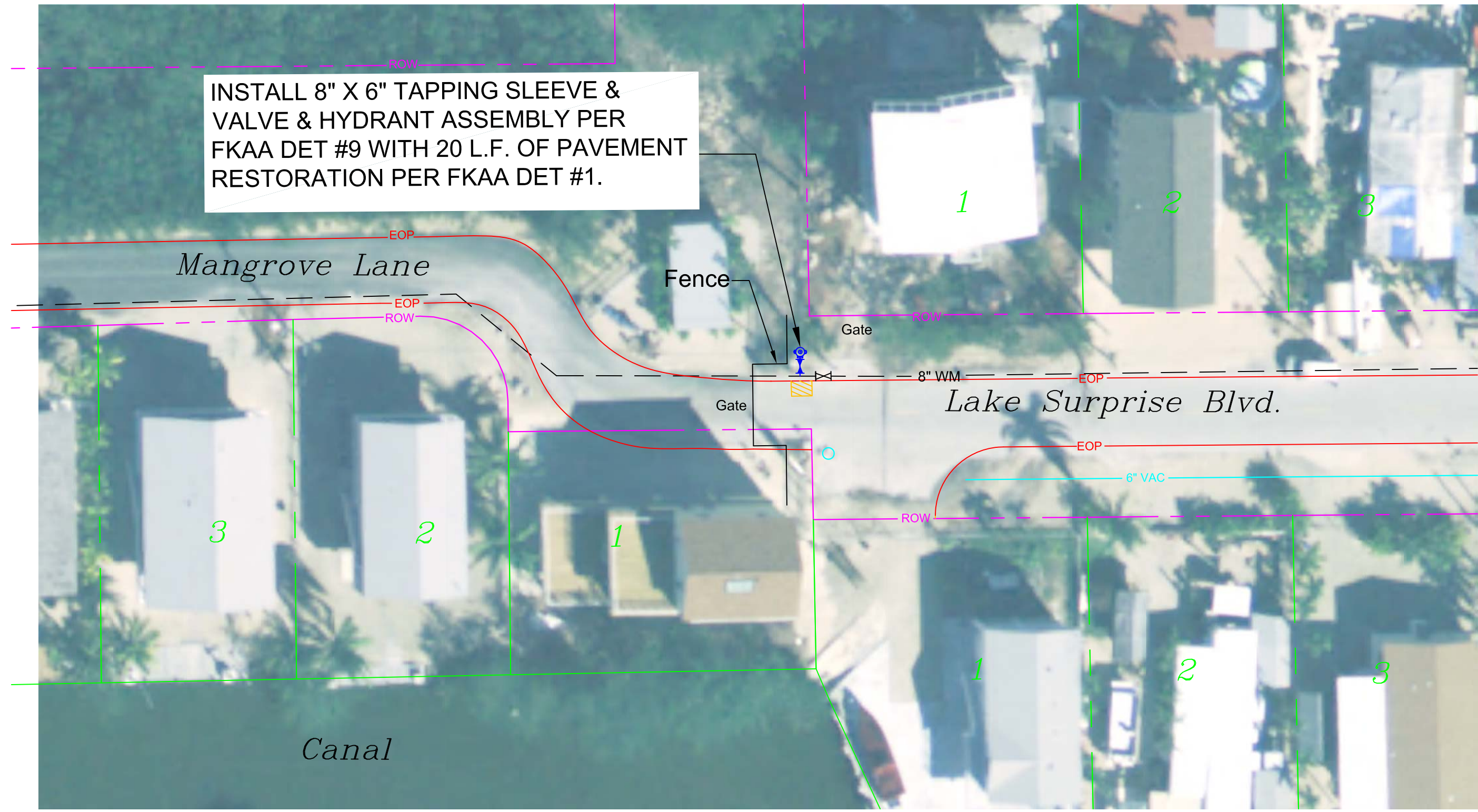


INSTALL 8" X 6" TAPPING SLEEVE & VALVE & HYDRANT ASSEMBLY PER FCAA DET #9 WITH 20 L.F. OF PAVEMENT RESTORATION PER FCAA DET #1.



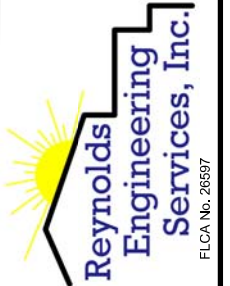
NOTE:
ALL WORK MUST CONFORM TO FCAA MINIMUM DESIGN AND CONSTRUCTION STANDARDS AND SPECIFICATIONS.

Scale: 1:30

DRAFT
Not for Construction

Revisions:

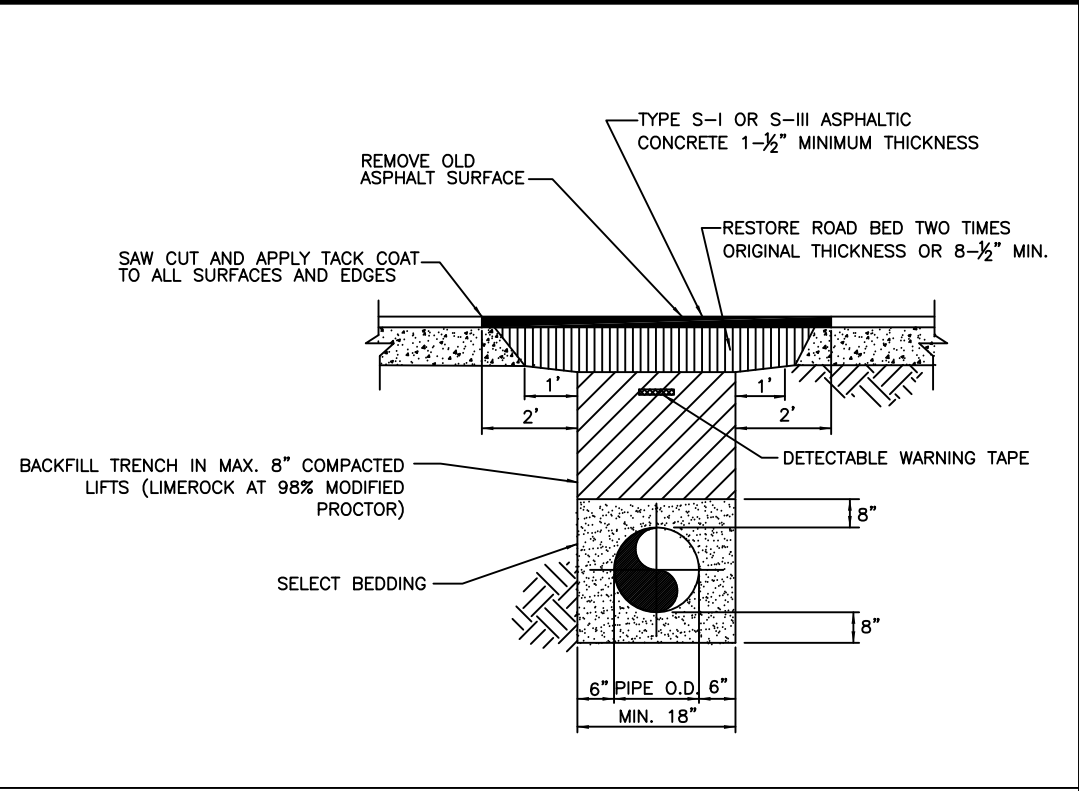
James C. Reynolds, PE
Fl. License No. 46685
22972 Overseas Highway
Cudjoe Key, Fl. 33042
305-394-5987
jim@reynoldsengeer.com



TITLE: Paradise Point-Fire Hydrant-#16-16
Mangrove Lane
Key Largo, Florida

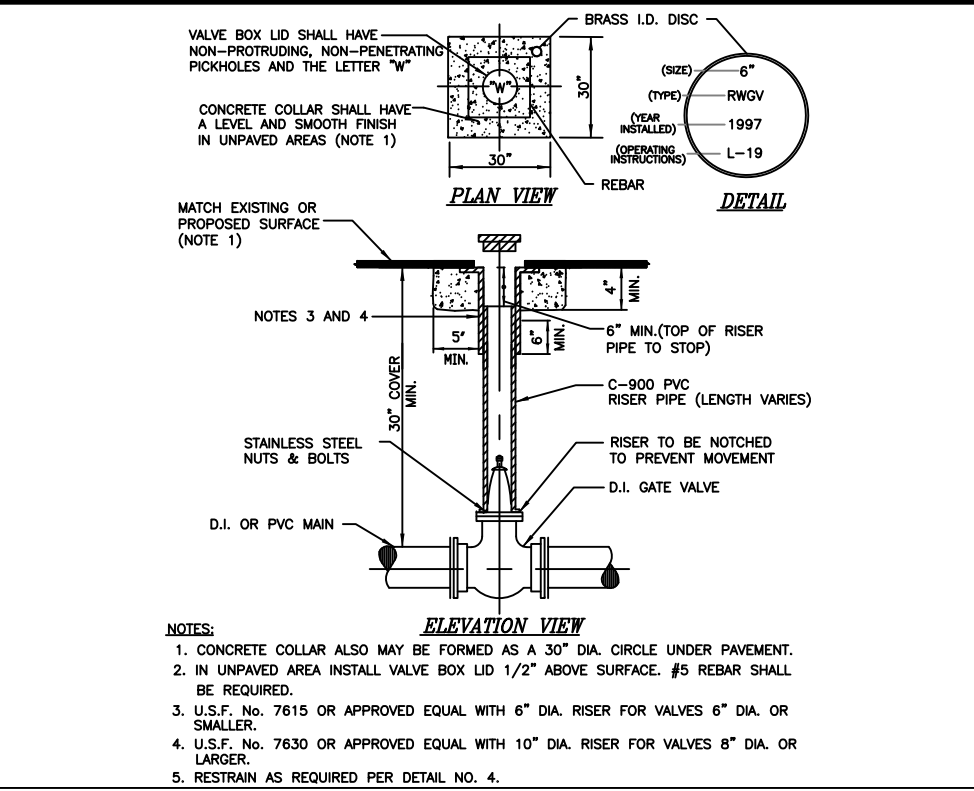
Date:
3/29/17

Page:
1 of 1



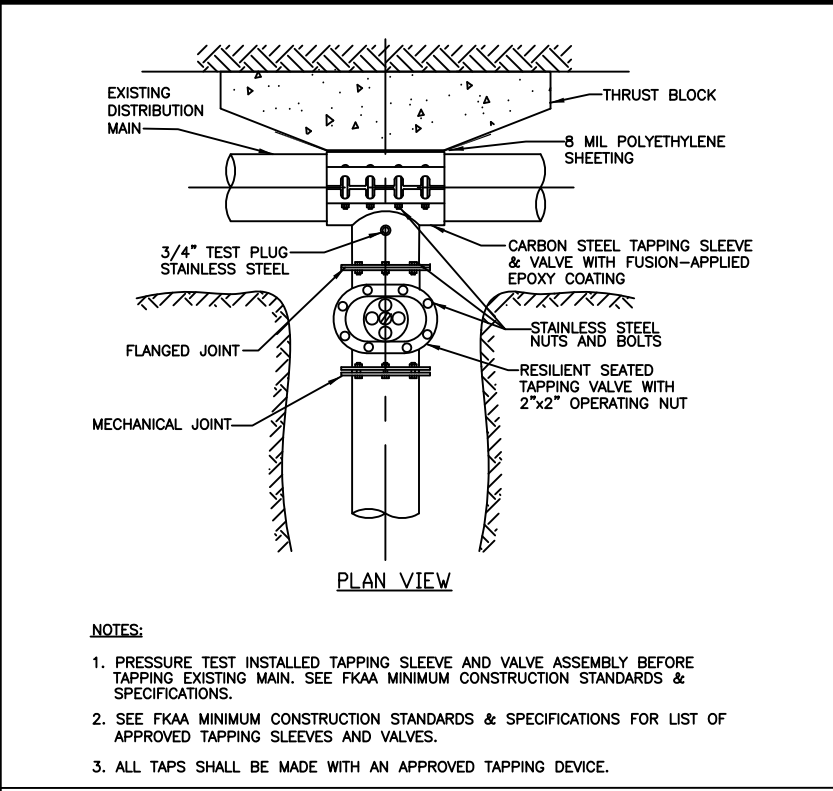
PAVEMENT RESTORATION WITH BACKFILL

STANDARD DETAIL DRAWING NO. 1a



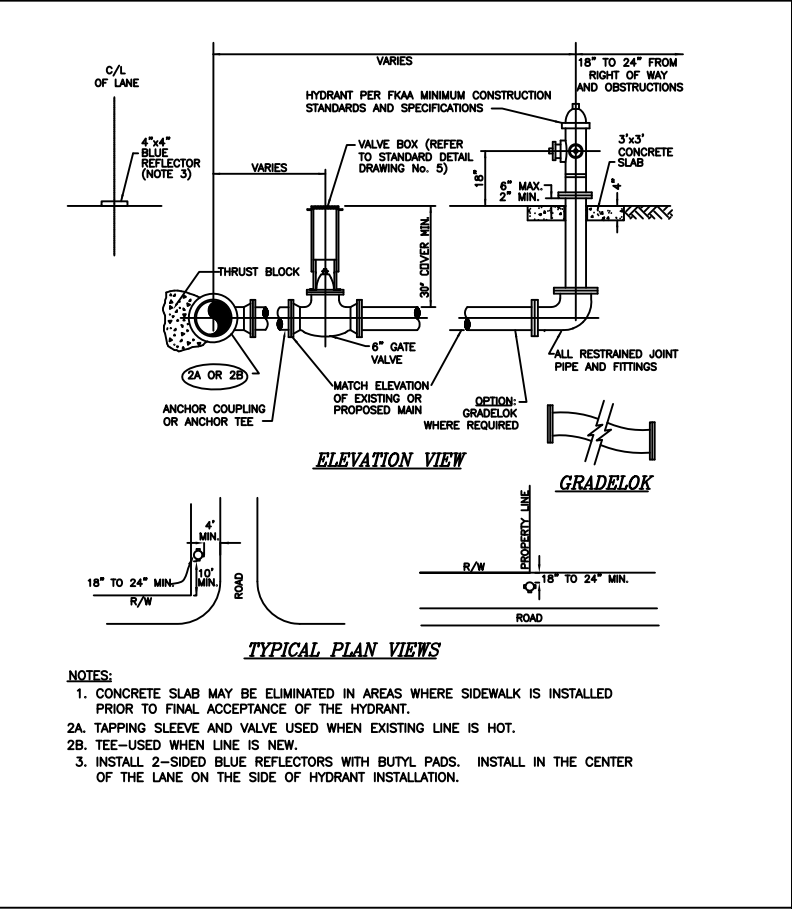
GATE VALVE & BOX

STANDARD DETAIL DRAWING NO. 5



TAPPING SLEEVE & VALVE FOR DISTRIBUTION

STANDARD DETAIL DRAWING NO. 7



FIRE HYDRANT ASSEMBLY

STANDARD DETAIL DRAWING NO. 9

PVC PIPE RESTRAINT JOINT SCHEDULE

NOMINAL PIPE SIZE (IN.)	HORIZONTAL BENDS				VERTICAL OFFSETS (SEE NOTE 4)		VALVES OR DEAD-ENDS L(FT.)	REDUCERS (SIZE) L FT.	TEES (NOTE 5)	
	90° BENDS L(FT.)	45° BENDS L(FT.)	22.5° BENDS L(FT.)	11.25° BENDS LR(FT.)	45° BENDS LU(FT.)	LI(FT.)			RUN SIZE	BRANCH SIZE
4	20	8	4	2	20	3	50	6 X 4	35	4" 4" F.O.
6	28	10	5	2	28	4	70	8 X 6	35	6" 4" <LESS F.O.
8	36	14	6	3	36	5	90	8 X 4	65	8" 4" <LESS F.O.
10	40	18	8	4	45	6	110	10 X 8	35	8" 6" <LESS F.O.
12	50	20	9	4	52	8	120	10 X 6	65	10" 8" 48
14	56	23	10	5	60	9	140	12 X 10	35	12" 6" <LESS F.O.
16	60	26	11	6	67	10	160	12 X 8	65	12" 8" 30
18	69	29	12	6	74	12	180	16 X 12	65	16" 10" 48
20	75	32	13	7	80	13	195	16 X 10	95	16" 12" 40
24	76	33	15	7	81	14	200	20 X 18	35	20" 16" 80
30	88	36	18	9	97	16	235	20 X 16	65	20" 12" <LESS F.O.
36	100	40	20	10	110	20	270	20 X 12	120	24" 24" 130
42	115	48	23	11	125	24	300	24 X 20	65	24" 20" 90
48	125	52	25	12	140	30	340	24 X 18	95	24" 16" 40
								24 X 16	120	24" 12" <LESS F.O.
								30 X 24	80	30" 24" 140
								30 X 20	150	30" 20" 80
								36 X 30	80	36" 30" 180
								36 X 24	150	36" 24" 50
								42 X 36	80	42" 36" 120
								42 X 30	150	42" 30" 80
								48 X 42	80	48" 42" 160
								48 X 36	150	48" 36" 80
										20" <LESS F.O.
										48" 250
										42" 180
										36" 90
										30" 40
										24" <LESS F.O.

PVC PIPE RESTRAINT NOTES

- THIS SCHEDULE SHALL BE UTILIZED ON ALL WATER, SEWER FORCE MAIN OR RECLAIMED WATER SYSTEMS. ALL FITTINGS SHALL BE RESTRAINED TO LENGTHS INDICATED ON THE ABOVE SCHEDULE, AT A MINIMUM.
- ASSUMPTIONS: PVC PIPE, SAFETY FACTOR = 1.5, TEST PRESSURE = 150 PSI, SOIL = GM OR SM, TRENCH TYPE 3, DEPTH OF COVER = 36".
- BENDS AND VALVES: SHALL BE RESTRAINED ON EACH SIDE OF FITTING.
- VERTICAL OFFSETS: ARE APPROX. 3 FEET COVER ON TOP AND APPROX. 8 FEET COVER ON BOTTOM. PER THE DETAILS, LU IS THE RESTRAINED LENGTH FOR THE UPPER (TOP) LEVEL. LI IS THE RESTRAINED LENGTH FOR THE LOWER (DEEPER) LEVEL. ASSUME 45 DEGREE BENDS.
- TEES: TOTAL LENGTH BETWEEN FIRST JOINTS OR RESTRAINED LENGTH ON EITHER SIDE OF TEE (RUN) SHALL BE A TOTAL DISTANCE OF 30 FEET (MIN) SEE SCHEDULE ABOVE FOR RESTRAINT LENGTH ON TEE "BRANCH" LINE.
- HDPE TO PVC TRANSITIONS: THE PVC PIPE SIDE SHALL BE RESTRAINED 35 FEET (MIN.).

F.O. = FITTING ONLY

PVC PIPE RESTRAINT JOINT SCHEDULE

STANDARD DETAIL DRAWING NO. 4 (1 OF 2)

LOCATION OF PUBLIC WATER SYSTEM MAINS IN ACCORDANCE WITH F.A.C. RULE 62-555.314

Other Pipe	Horizontal Separation	Crossings (1)	Joint Spacing @ Crossings (Full Joint Centered)
Storm Sewer, Stormwater Force Main, Reclaimed Water (2)	Water Main 3 ft. minimum	Water Main 12 inches is the minimum, except for storm sewer, then 6 inches is the minimum and 12 inches is preferred	Water Main Alternate 3 ft. minimum
Vacuum Sanitary Sewer	Water Main 10 ft. preferred 3 ft. minimum	Water Main 12 inches preferred 6 inches minimum	Water Main Alternate 3 ft. minimum
Gravity or Pressure Sanitary Sewer, Sanitary Sewer Force Main, Reclaimed Water (4)	Water Main 10 ft. preferred 6 ft. minimum (3)	Water Main 12 inches is the minimum, except for gravity sewer, then 6 inches is the minimum and 12 inches is preferred	Water Main Alternate 6 ft. minimum
On-Site Sewage Treatment & Disposal System	10 ft. minimum	---	---

(1) Water main should cross above other pipe. When water main must be below other pipe, the minimum separation is 12 inches.
(2) Reclaimed water regulated under Part III of Chapter 62-610, F.A.C.
(3) 3 ft. for gravity sanitary sewer where the bottom of the water main is laid at least 6 inches above the top of the gravity sanitary sewer.
(4) Reclaimed water not regulated under Part III of Chapter 62-610, F.A.C.

Key Largo Fire Hydrants
Phase 6
Key Largo, Florida

DRAFT
Not for Construction

NOTE:
ALL WORK MUST CONFORM TO FCAA MINIMUM DESIGN AND CONSTRUCTION STANDARDS AND SPECIFICATIONS.

TITLE:
Date:
3/29/2017
Page:
Details

Revisions:
James C. Reynolds, PE
Fl. License No. 46685
22972 Overseas Highway
Cudjoe Key, Fl. 33042
305-394-5987
jim@reynoldsengeerservices.com

